

Map 2026 Zoom IN

Presented to: **The Community Bank**
March 18, 2026

Presented by: **Ncontracts**

Loans: CRA DATA DROP LN THRU 12.31.2025.xlsx

Deposits: CRA Data Drop CD thru 12.31.2025.xlsx

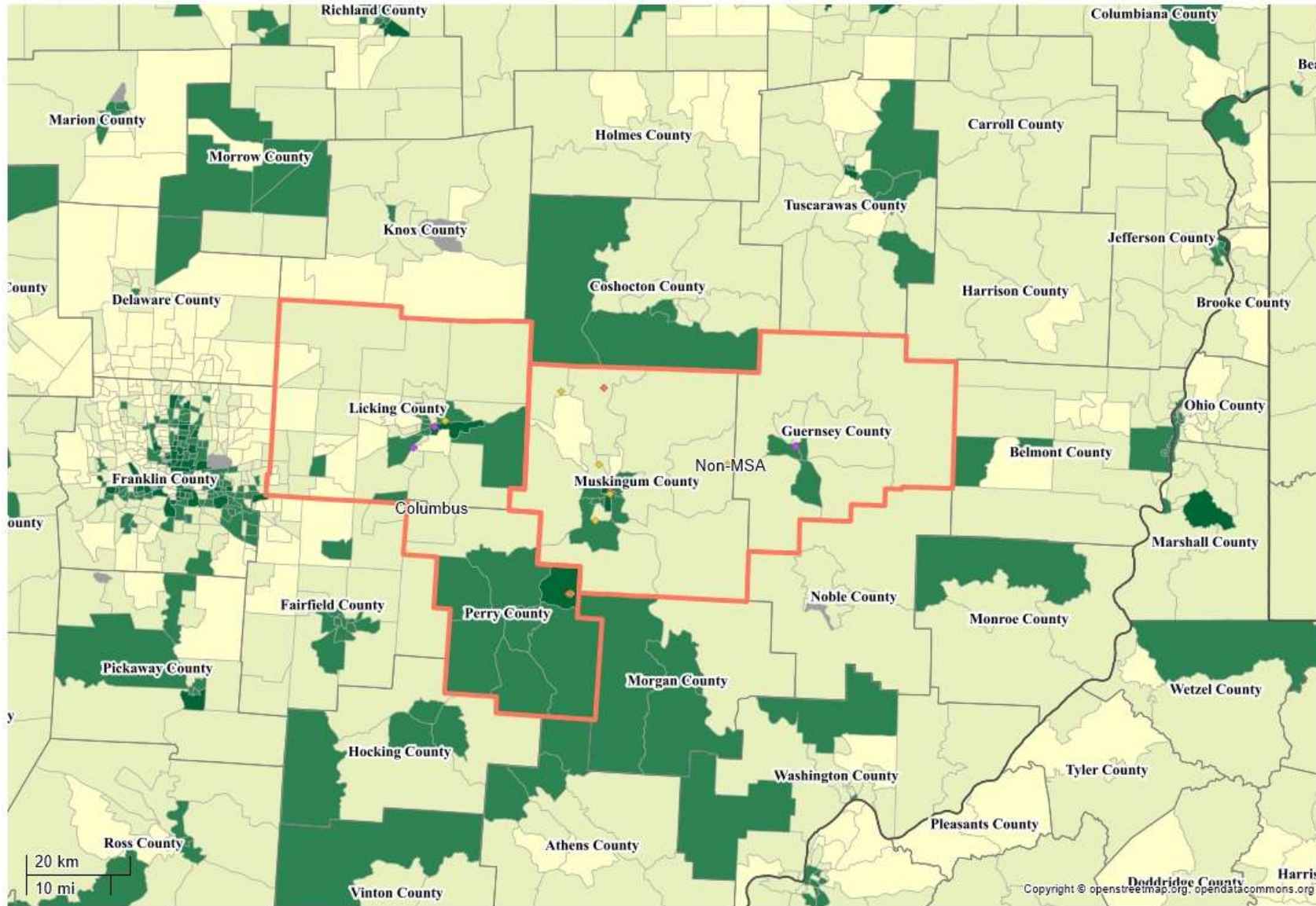
CRA LAR: N/A

HMDA: TCB HMDA LAR

CRA Benchmark Data: 2024 Public CRA Data as of Nov 13, 2025

HMDA Benchmark Data: 2024 Public HMDA Data as of June 26, 2025

Census Data: 2025 Census Data released July 10, 2025



- State
- County
- Census Tract
- Zip Code
- Assessment Area
- ◆ Branch
- ◆ Limited Service Branch
- ◆ Main Office
- ◆ Cash Dispenser
- ◆ Deposit ATM or ITM
- ◆ Other
- Income Level**
- Low
- Moderate
- Middle
- Upper
- N/A

Applied Filters

- CRA Loans Action Taken Date: (1/1/2025 - 12/31/2025)
- Facility Status: (Open)
- CRA Loans: Loan File
- Real Estate Loans Action Taken Date: (1/1/2025 - 12/31/2025)
- Real Estate Loans: HMDA LAR
- You are included in the HMDA benchmark.